

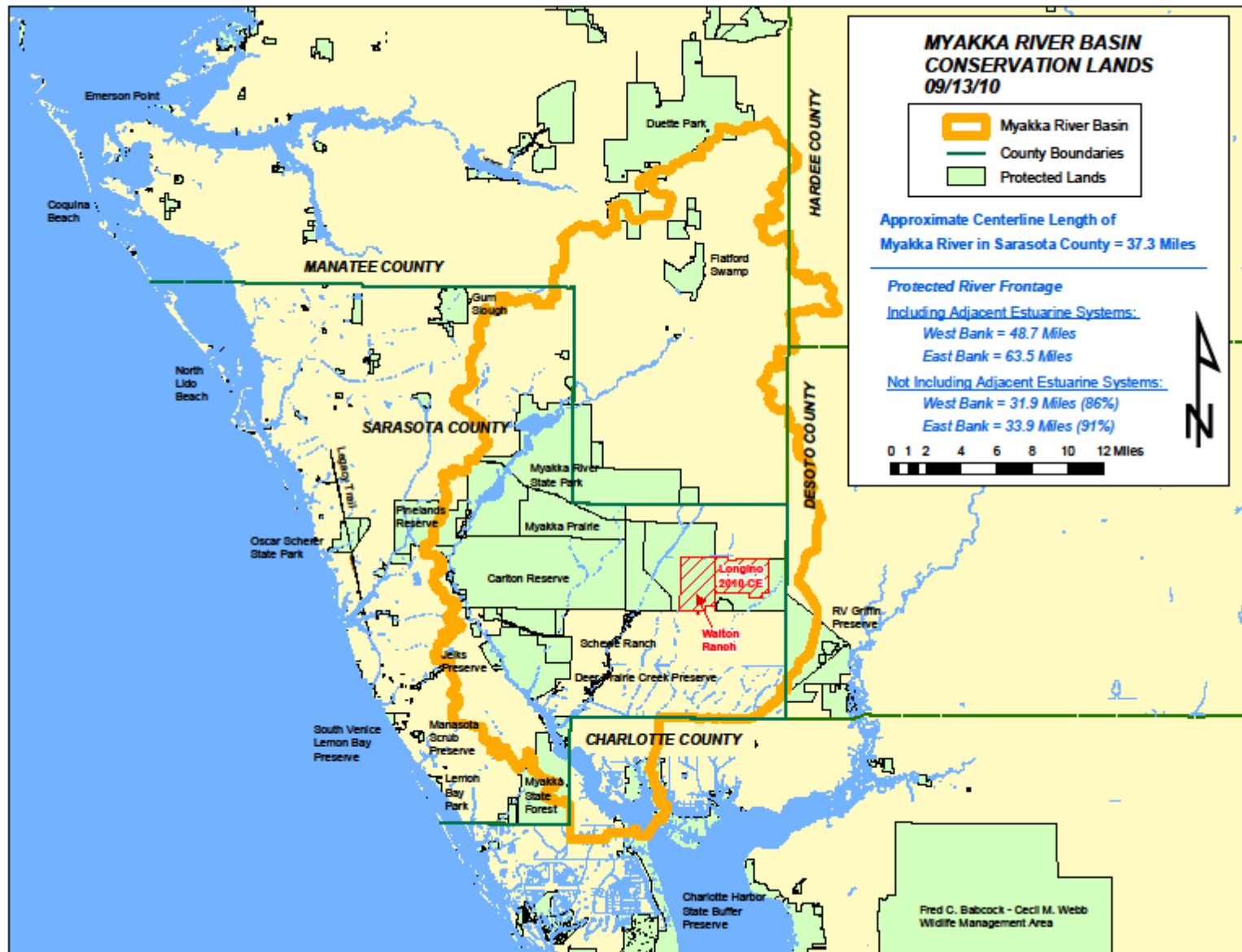
Sarasota County

Environmentally Sensitive Lands Protection Program

Ecological Corridor

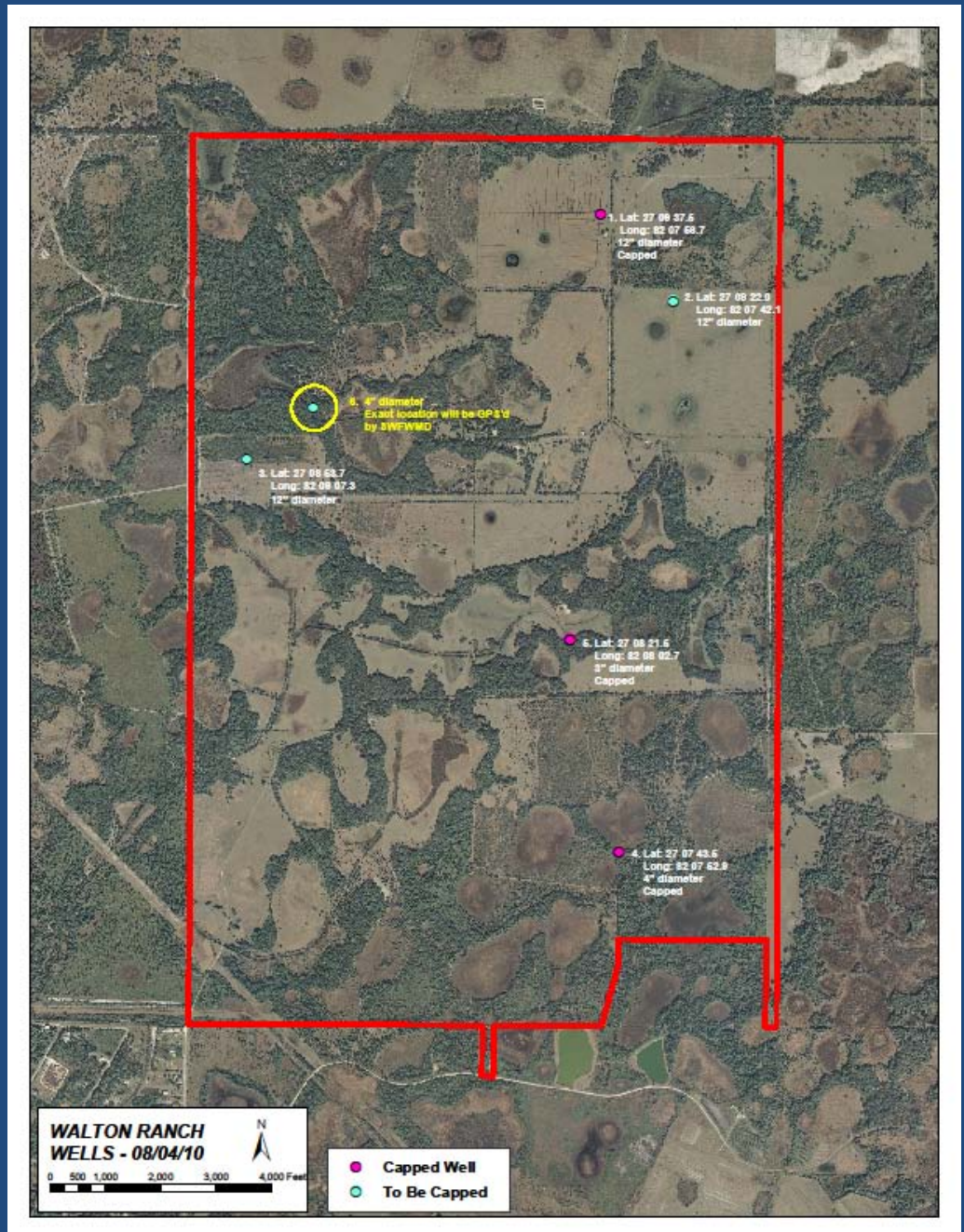
- Additional 7,741 acres
- Myakka River to DeSoto County line
- Freshwater marshes, pine flatwoods, hardwood hammocks and pastures
- Future greenway, trail connections and other ecotourism opportunities





WALTON RANCH

- 3,760 acres
- Closed July 15
- \$22.5 M
- Partnership with SWFWMD



LONGINO
2010 CE

3,981 acres

Partnership with SWFWMD

Closed August 19

\$14.55 M

